

# POS 600/605

## Customer Display

### Installation Guide



# Index

1.Accessory .....	3
2.Specification.....	4
2.1 VFD type.....	4
2.2 LCD type(V1.1) .....	5
2.3 LED type .....	6
3.Connector Pin Assignment.....	7
4.Install Customer Display .....	8
4.1 Install Customer Display with Pole.....	8
4.2 Install Customer Display without Pole.....	10
5.Test Program.....	11

# 1. Accessory



Customer Display with Pole Module



Customer Display without Pole Module



22cm Pole Support



RJ-45 to DB-9F Flat Cable



9cm Pole Support



Pole Support Cover kit

# 2. Specification

## 2.1 VFD type

Model	2*20 VFD	1*12 VFD
Display method	Vacuum fluorescent display	
Number of character	40 characters ( 20 columns x 2 lines)	12 characters ( 12 columns x 1 line)
Character font	5 x 7 Dot matrix: 9mm x 5.25mm	7 Segment Dot matrix: 17mm x 5.4mm
Display color	Blue Green	Blue Green
Brightness	700 cd /m <sup>2</sup>	
Character type	96 alphanumeric 13 kinds of international character set 1 kind of user define character	10 numeric
Power supply	12 ~ 19V DC	12 ~ 19V DC
Power consumption	3 ~ 6 W	2 ~ 4W
MTBF	25000 hours (power on time)	
Panel dimensions	224 (W) x 93 (H) x 50(D) mm	
Support dimensions	Long support: 22 cm Short support: 9 cm	
Viewing angle	-5 ~ 60 degrees	
Rotation angle	Maximum 270 degrees	
Operating temperature	5 ~ 45°C	
Operating Humidity	30% ~ 85%	
Storage Temperature	-10 ~ 55°C	
Storage Humidity	10% ~ 85%	

If you choose VFD type, set the jumper of the COM port (Pin 1 or Pin 9) to activate +12V DC. Please refer to the POS600 605 B55 M/B Installation Guide.

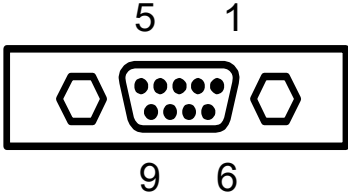
## 2.2 LCD type(V1.1)

ITEM	DESCRIPTIONS
Display Method	Liquid crystal display
LCD Type	STN Blue mode
Backlight Mode	CCFL backlight
Brightness	100 cd/m <sup>2</sup>
Display Color	White character on blue background
Number of Character	30 x 4 lines (2 lines double high ) alphanumeric 15 x 4 lines (2 lines double high ) Chinese characters
Character Font	8 x 16 dot by alphanumeric, 16 x 16 dot by Chinese characters
Character Type	96 alphanumeric, 13000 Traditional Chinese characters (Big 5)
	96 alphanumeric, 8000 Simplified Chinese characters (GB)
	96 alphanumeric, 7000 Japanese characters
	96 alphanumeric, 8000 Korean characters
Character Size	8.47 x 4.24mm(16x8 dots)
	8.47 x 8.47mm(16x16 dots)
	16.94 x 8.47mm(32x16 dots)
Power Supply (For stand alone type)	9~ 33 VDC
Power consumption (stand alone LCD type)	3~ 6 W (Standby : 1 W)
MTBF	15~ 20k hours (life time)
Support Dimensions	220 mm x 1 + 90 mm x 1
Operating Temperature	0 ~ 50°C
Operating Humidity	30 ~ 85%
Storage Temperature	-20 ~ 55°C
Storage Humidity	10 ~ 85%
Viewing Angle	-5 ~ 60°
Rotation Angle	270°

## 2.3 LED type

ITEM	DESCRIPTIONS
Display Method	LED
Number of Character	11 characters
Character Font	7 segment
Display Color	Yellow Green
Brightness	450 cd/m <sup>2</sup>
Character Type	10 numeric
Character Size	14.3 x 9 mm
Power Supply	9 ~ 35vdc
Power Consumption	3~ 6 W
MTBF	25k hours
Panel Dimensions	224 (W) x 93 (H) x 50(D) mm
Support Dimensions	219 mm x 1 + 88 mm x 1
Base Dimensions	190 (W) x 55 (H) x 96(D) mm
Viewing Angle	-5 ~ 60°
Rotation Angle	270°
Weight	1.2 Kg
Operating Temperature	5 ~ 45°C
Operating Humidity	30 ~ 85%
Storage Temperature	-10 ~ 55°C
Storage Humidity	10 ~ 85%

# 3.Connector Pin Assignment



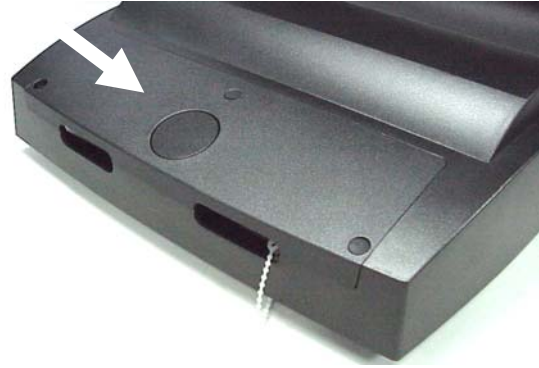
Pin	Assignment	Pin	Assignment	Pin	Assignment
1	+12V	4	DSR	7	NC
2	RXD	5	GND	8	DSR
3	TXD	6	DSR	9	NC

# 4. Install Customer Display

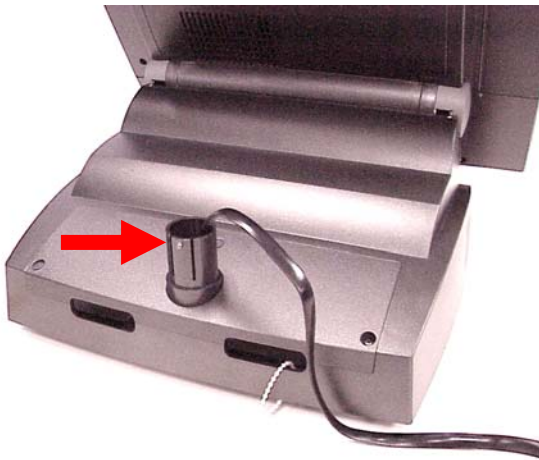
## 4.1 Install Pole Customer Display



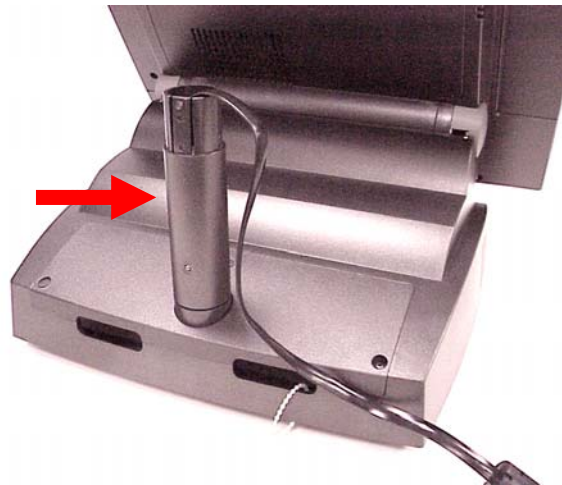
a. Connect the DB-9F cable to any of the COM ports.



b. Remove the cap from the pole display base by fingers.

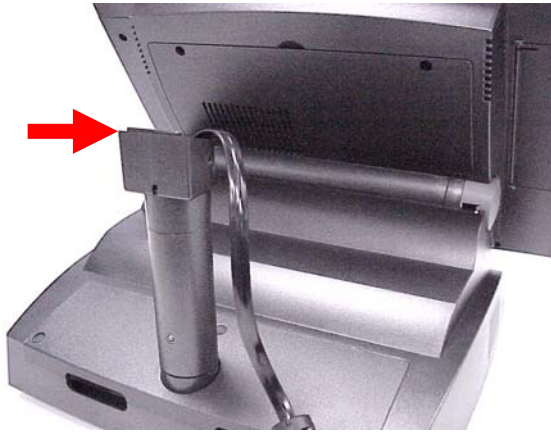


c. Install the pole support kit to the system base unit.



d. Install either or both pole to the pole support kit.





e. Install the top of the pole display to the support pole.



f. Insert the RJ45 connector into the jack of the customer display.



g. Insert the screw into the hole of the connection kit. Notice the direction of insertion.



h. Fasten the cap at the other end of the screw. The installation is completed.

## 4.2 Install Flat Type Customer Display



a. Connect the RS232 connector to any of the COM ports.



b. Fasten the two screws of the RS232 connector.

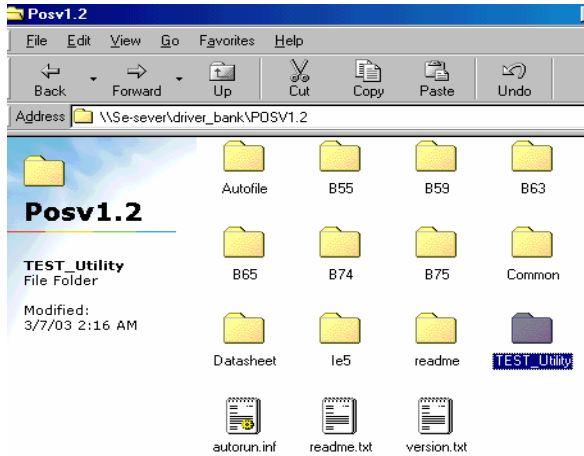


c. Connect the RJ45 before mounting the customer display.

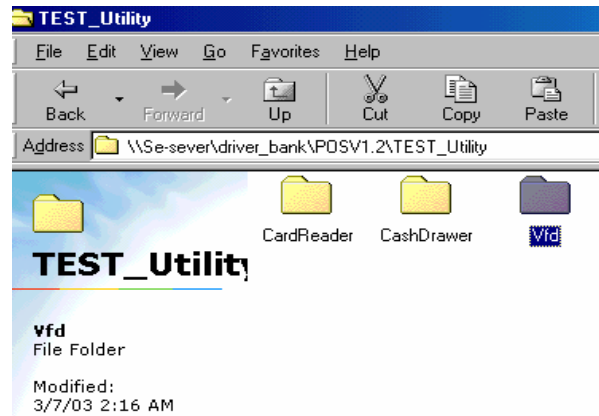


d. Fasten the two screws to complete this installation.

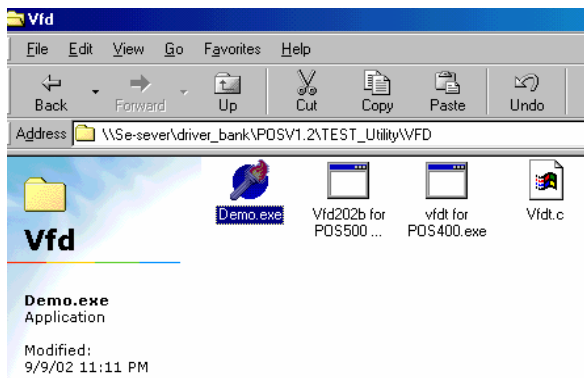
# 5. Test Program



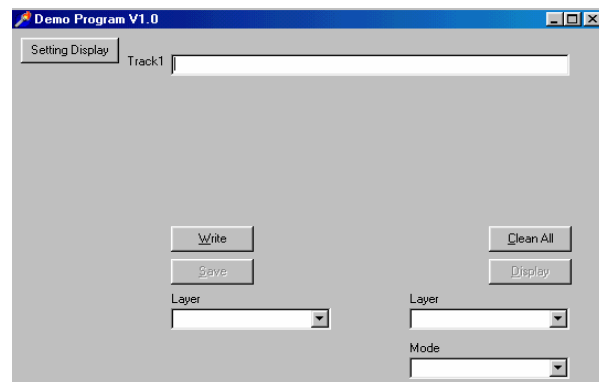
a. Select "TEST\_Utility" in the Driver Bank.



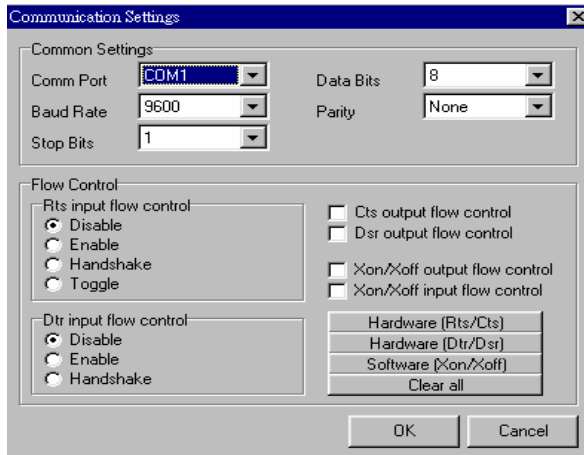
b. Select "Vfd" in the TEST\_Utility window.



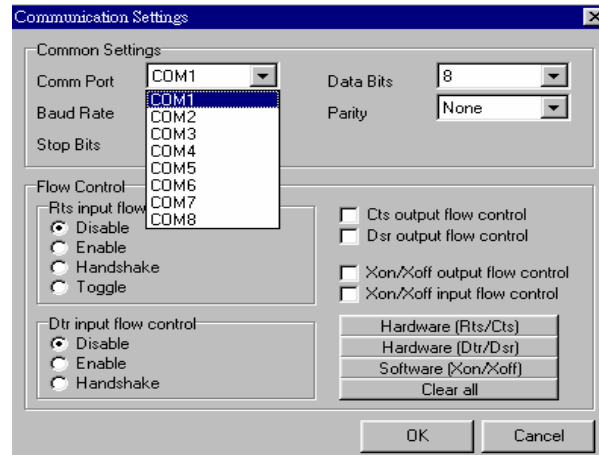
c. Double click "Demo.exe" in the Vfd window.



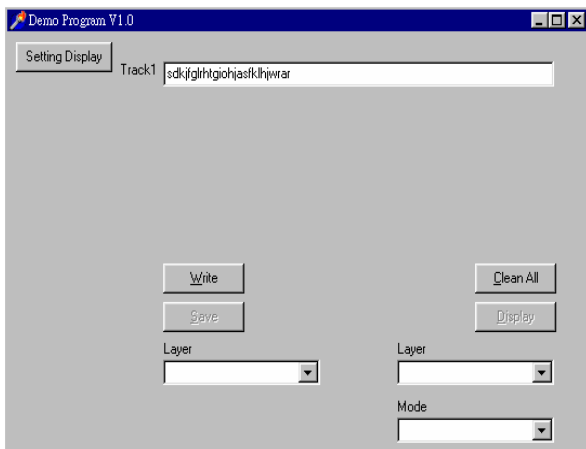
d. Click "Setting Display" button on the Demo Program V1.0 window.



e. Pull down "Comm Port" in the Communication Settings window.



f. Choose the COM port your Customer Display is connected to with the RS232 connector.



g. Type any words and click "Write" button for testing, and you will see them on the customer display.